



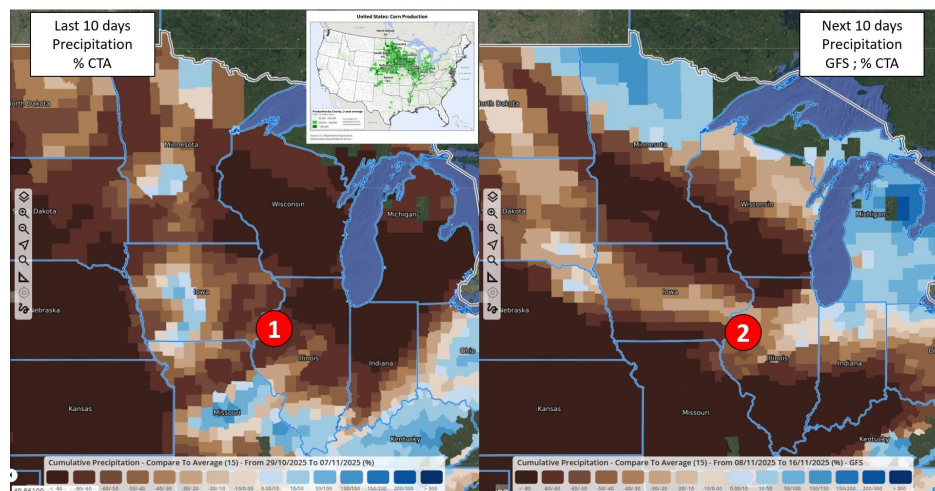
- November 07, 2025 II EarthDaily World
in 10 Overview -

Through daily monitoring on the [Geosys application](#), **EarthDaily Agro** keeps a pulse on the world's major crop producing regions. Here is a highlight of the worldwide crop conditions in 10 pictures.

1. USA - Do conditions remain favorable for maize and soybean harvesting?

YES

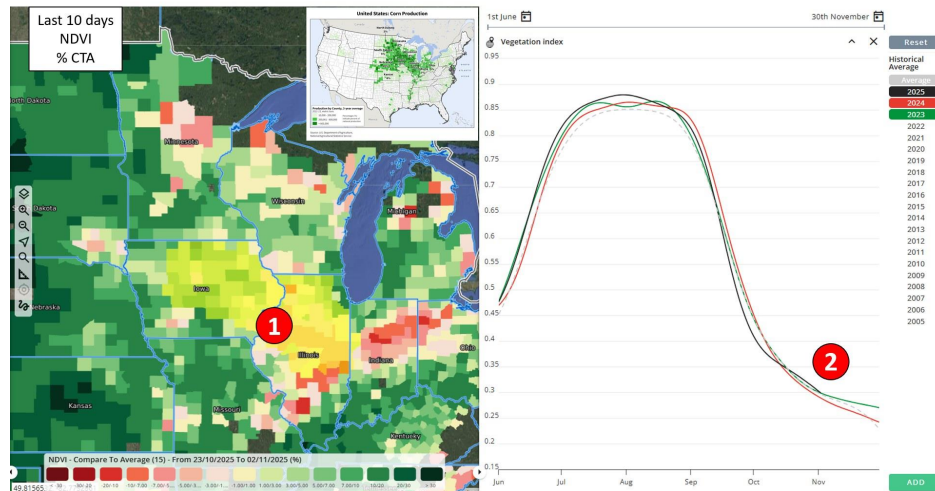
The predominantly dry trend across the Corn Belt in recent days ① is expected to continue in the coming days ②, which will be favorable for harvest progress.



2. USA - Do vegetation indices show significant harvest delays in the core of the Corn Belt?

NO

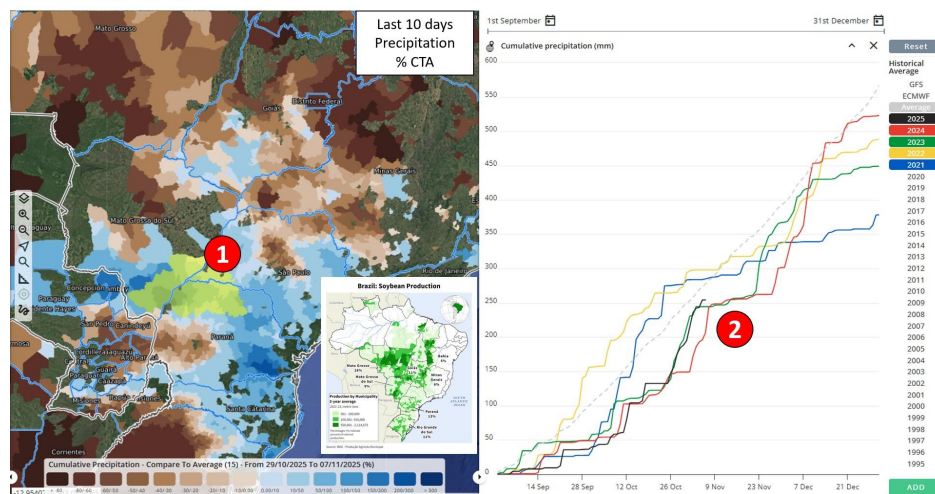
Vegetation indices in Iowa and Illinois ① are heterogeneous but on average close to values from recent years ②, suggesting a maturation and harvest pace quite similar to that of 2023.



3. BRAZIL - Has recent rainfall been satisfactory across much of the soybean area?

YES

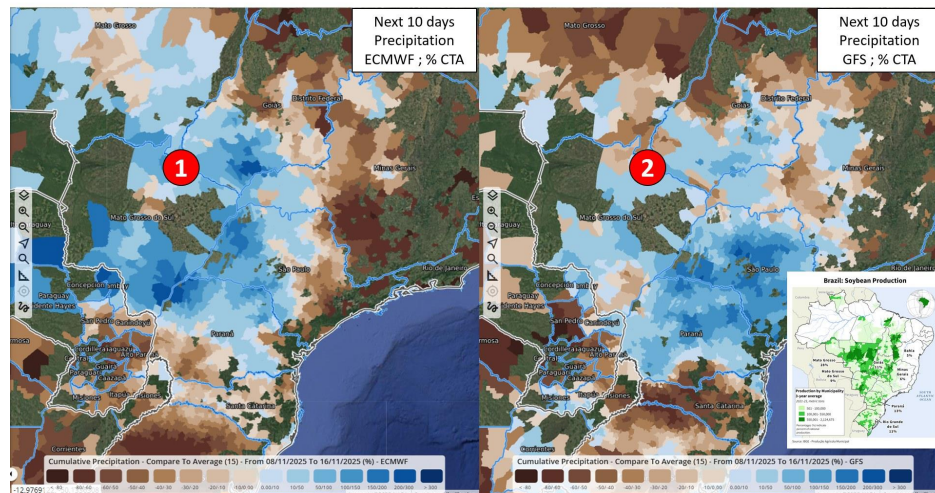
Over the past ten days, rainfall has been above average across parts of Goiás, Mato Grosso Sul, and Paraná ①, with cumulative rainfall since September 1st quickly returning to near-average levels ②.



4. BRAZIL - Will the wet trend continue in the coming days?

YES

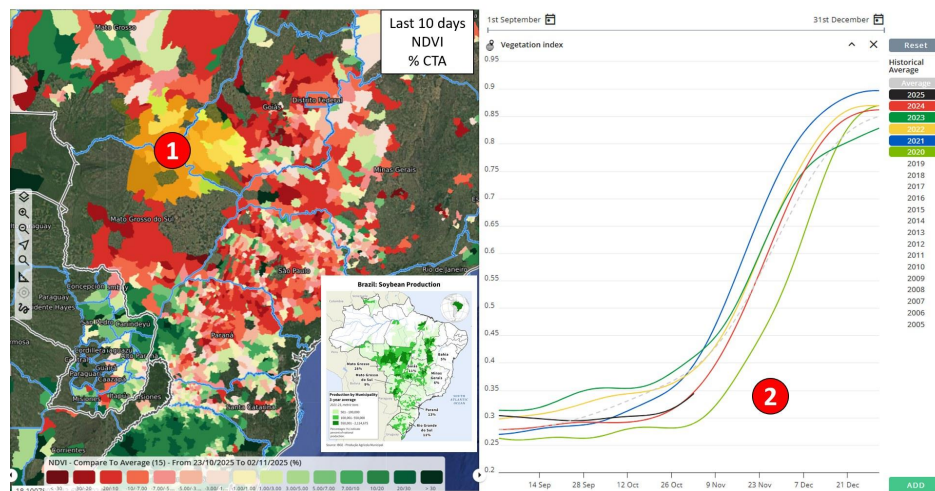
Rainfall over the next ten days is expected to be above average from Mato Grosso to Paraná, according to ECMWF ① and, to a lesser extent, according to GFS ②.



5. BRAZIL - Is soybean emergence finally visible in the vegetation indices?

YES

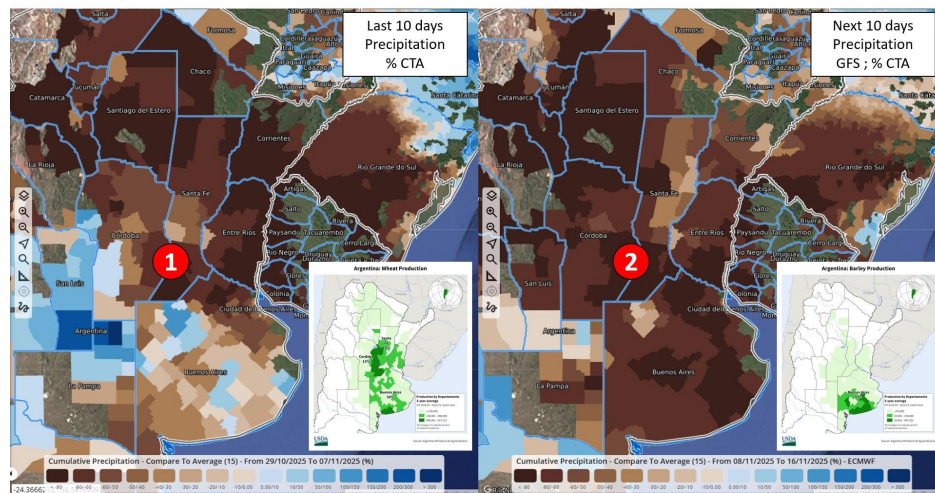
Vegetation indices remain rather low at this stage in the soybean area ①, but values are now starting to rise, indicating crop growth, with 2024 as a comparable year ②.



6. ARGENTINA - Is the dry trend continuing for the end of the wheat cycle?

YES

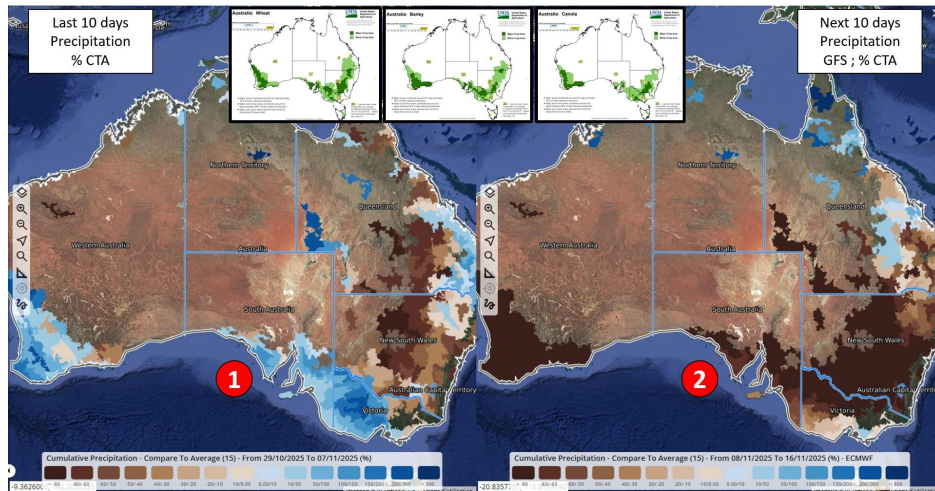
The dry trend observed in recent days ①, favorable for the start of wheat harvesting, is expected to continue in the coming days across the entire country ②.



7. AUSTRALIA - Will conditions be favorable for harvesting in the coming days?

YES

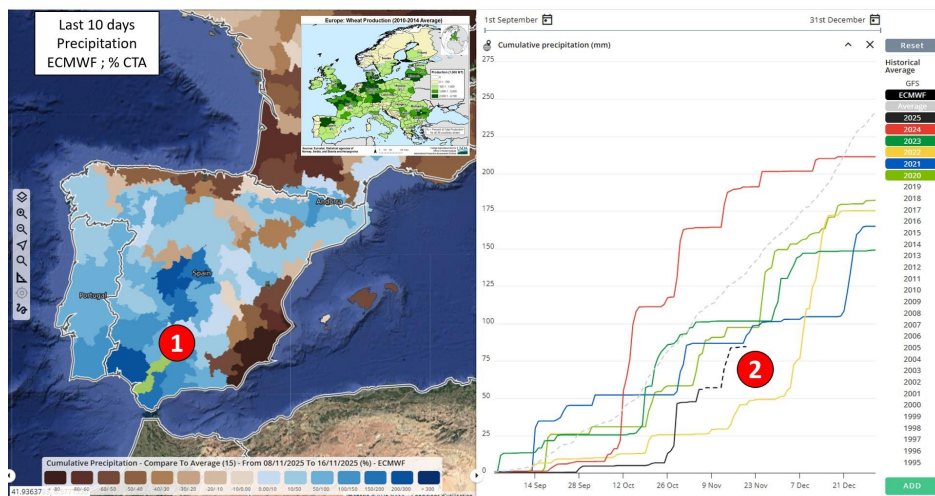
Although not truly problematic, recent rains in the south may have slowed the start of harvesting ①. In the coming days, the dry trend across most of the country will be favorable for crop maturation and harvesting ②.



8. EUROPE - Has the water situation significantly improved in the durum wheat area in Spain?

YES

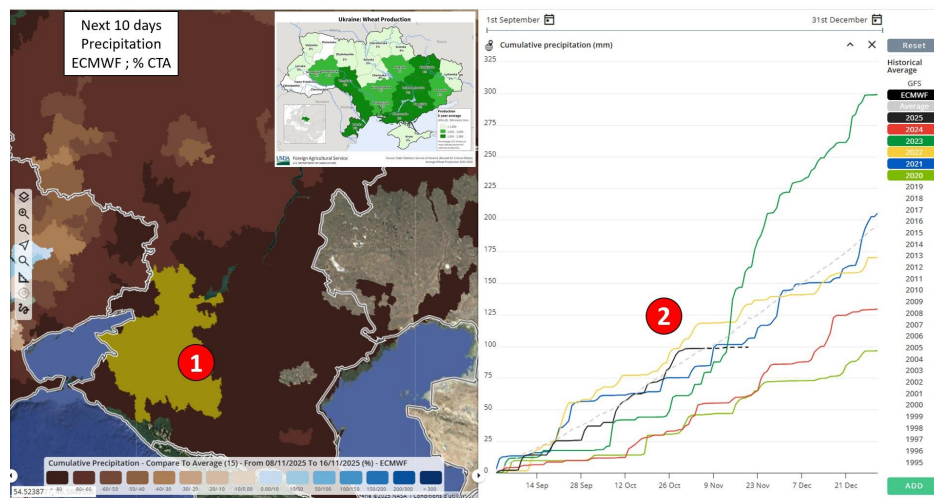
Rainfall in recent days has been above average in Spain, particularly in the core durum wheat production area ①, bringing cumulative rainfall since September 1st to a satisfactory level for the start of the winter crop cycle ②.



9. RUSSIA - Does the start of the wheat season appear satisfactory?

YES

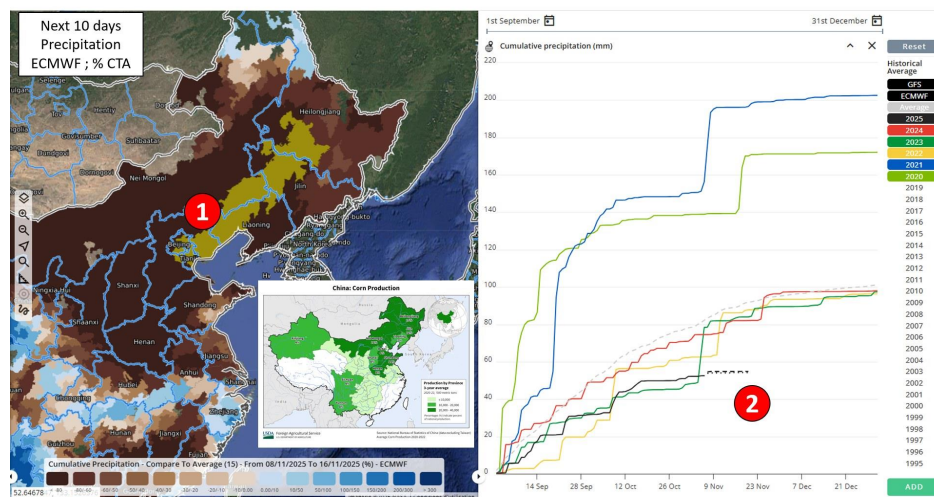
Rainfall in the coming days is expected to be below average in the winter wheat area ①, but this is not a concern given the near-average rainfall received in recent days ②.



10. CHINA - Are conditions favorable for completing maize and soybean harvesting?

YES

Rainfall in the coming days is expected to be below average across the entire maize and soybean area ①. The continuation of the recent dry trend ② will allow for rapid progress in completing the harvest.



Want to learn more?

Join EarthDaily Agro on [LinkedIn](#) or [Twitter](#) for more news and insights, or visit us online at EarthDailyAgro.com

© 2023 EarthDaily Analytics | All Rights Reserved